

SEAT

Designer: SPARK - Cameron Johnston



SLAT OPTIONS

- Oiled hardwood
- Composite
- Clear anodised aluminium
- Wood grain aluminium

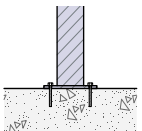
FRAME OPTIONS

- Hot dip galvanised mild steel

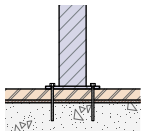
FRAME FINISHES

- Hot dip galvanised
- Powdercoated

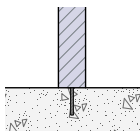
INSTALLATION



Bolt Down



Bolt Through



Concealed Fix

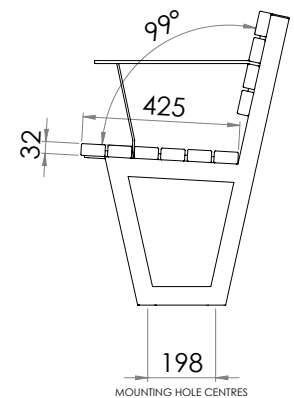
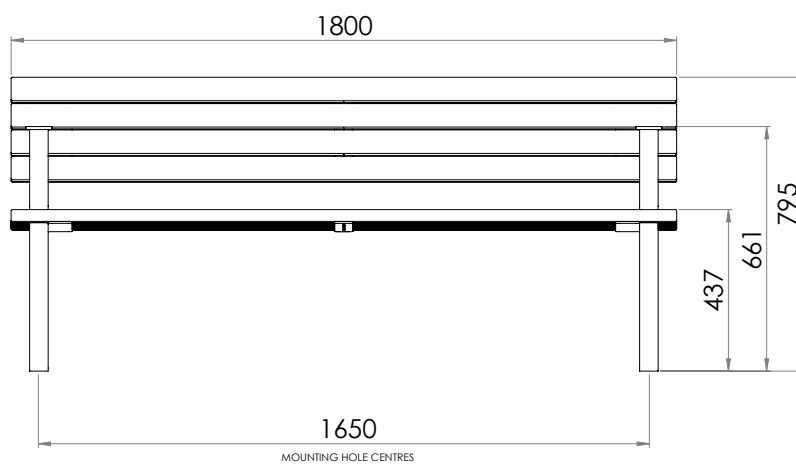
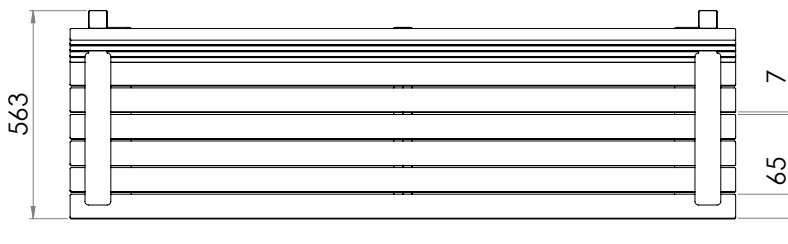
FIXINGS

- 12mm fixings for 14mm diameter holes

Alternative materials and finishes available on request

GEMTREE SEAT

SPECIFICATIONS



All measurements are in millimetres. Drawings are not to scale.
Dimensions shown are for timber slat option.

PRODUCT CODE	FRAME FINISH	SLAT OPTION & SIZE (mm)
GMT003-HDG-GV-T	Galvanised	65x32 Oiled hardwood timber
GMT003-HDG-GV-C	Galvanised	60x40 Composite
GMT003-HDG-GV-A	Galvanised	65x35 Clear anodised aluminium
GMT003-HDG-GV-W	Galvanised	65x35 Wood grain aluminium
GMT003-HDG-PC-T	Powdercoated	65x32 Oiled hardwood timber
GMT003-HDG-PC-C	Powdercoated	60x40 Composite
GMT003-HDG-PC-A	Powdercoated	65x35 Clear anodised aluminium
GMT003-HDG-PC-W	Powdercoated	65x35 Wood grain aluminium